

January 10, 2017

## BROCKVILLE REGIONAL TACKABERRY AIRPORT Safety Information Circular

### TOPIC:

Over flights of the Brockville Regional Tackaberry Airport (CNL3) by IFR aircraft inbound to Ogdensburg, New York (KOGS).

### PURPOSE:

To supplement the FAA and NAV CANADA Notams regarding those over flights and provide additional awareness for VFR pilots operating at CNL3.

### BACKGROUND:

During November, 2016, the Airport Manager started to notice large, transport category aircraft that, on occasion, would pass overhead, maneuver at an unusually low altitude in the vicinity of the Brockville Airport and then depart to the east. The APM's attempts to contact those aircraft, on the Aerodrome Traffic Frequency (123.0 Mhz), met with no response.

Acting in its' capacity as the Airport Operator, Brock Air Services reported the occurrence to Transport Canada. As the over flights became more regular, we reviewed the instrument approach procedures for Ogdensburg, New York, which is located approximately 12 nautical miles to the east. It seemed likely that those aircraft were conducting the Ogdensburg RNAV (GPS) RWY 9 instrument approach procedure.

The F.A.A.'s RNAV (GPS) RWY 9 approach plate was issued on 31 May 2012 (see attachment). It should be noted that the published procedure does not display the location of the Brockville airport, nor its' Aerodrome Traffic Frequency.

During the summer of 2016, the runway at Ogdensburg, NY was lengthened to 6,400 feet and improvements were made to its' passenger terminal. The Ogdensburg airport then reopened and in October 2016, Allegiant Air commenced scheduled airline, passenger service to destinations in south Florida, using Airbus 320 type aircraft.

### POTENTIAL "HOT SPOTS" FOR LOSS OF SEPARATION AND WAKE TURBULENCE

With calm wind conditions, or a wind favouring Runway 09 at KOGS, IFR aircraft inbound from the south may choose to fly the Ogdensburg RNAV (GPS) RWY 9 approach.

Here are some areas for increased pilot vigilance:

1. the segments joining GPS waypoints WILRD to CUKPI and YUSUB may be flown at 2000' above Mean Sea Level. This routing lies in an area often used for VFR aircraft conducting sight seeing flights over the St. Lawrence River and just to the west of the City of Brockville.
2. We have approximated the position of CNL3 on the RWY 9 approach plate. CNL3 lies slightly northwest of GPS waypoint YUSUB. The circuit altitude, at CNL3, is flown at 1400' above MSL. VFR aircraft inbound to the CNL3 and overflying the airport at a min. of 500' above the circuit (prior to joining), may encounter a 2000' IFR over flight.

cont'd.../2

POTENTIAL "HOT SPOTS" cont'd

3. "Wake turbulence may be experienced by aircraft when flying behind and less than 1,000' below a large aircraft". (Aeronautical Information Manual TP 14371E). Anticipate moderate to severe wake turbulence when below and behind any large aircraft, overflying CNL3, and especially if it is in the landing configuration.

TRAFFIC PRIORITY AT UNCONTROLLED AERODROMES

*"Some pilots operating under VFR, at many sites, prefer to give commercial IFR and larger type of aircraft priority. This practice, however, is a personal airmanship courtesy, and it should be noted that these aircraft do not establish any priority over other aircraft operating VFR at that aerodrome". (Aeronautical Information Manual TP 14371E)*

WHAT IS BEING DONE

1. When this matter was brought to the attention of NAV CANADA and the Federal Aviation Administration, each issued a Notam for dissemination on their respective side of the international border.

NAV CANADA:

160513 CYGK BROCKVILLE REGIONAL TACKABERRY APRT  
CNL3 AMEND PUB: CAUTION: POSSIBLE ACFT OVERFLYING BROCKVILLE (CNL3)  
ON APCH INTO OGDENSBURG, NY (KOGS). ACFT ON THE KOGS APCH MAY NOT  
BE ON CNL3 ATF (123.0). CAUTION POSSIBLE WAKE TURBULENCE.

FAA:

IOGS 12/048 OGS AD AP ACFR LDG RWY 09 MNT 123.0 (CNL3 UNICOM)  
1612282053 PERM

2. The FAA has been in contact with Allegiant Air and has encouraged its' flight crews to include an awareness of the Brockville Airport and a need to communicate on 123.0 in its' approach briefing for RWY 09 at KOGS.
3. The FAA has advised that it is in the process of revising the Ogdensburg RNAV (GPS) RWY 9 instrument approach procedure. The segment altitude(s) of 2000' MSL will be increased to 3000'MSL. The Brockville airport and its' ATF will be included on the revised instrument approach plate. The new procedure will be published and distributed in the spring of 2017.
4. The Ogdensburg Airport Manager has agreed to e-mail the Allegiant Air flight schedule (see attached) and any future changes, to Brock Air Services, for its' further distribution at CNL3.

Cont'd.../3

TIPS TO MITIGATE A LOSS OF VFR/IFR AIRCRAFT SEPARATION

1. Ensure that your transponder is ON and squawking 1200. If Mode C capable, select ALT
2. Comply with VFR communication procedures at uncontrolled aerodromes with an ATF
3. Keep in mind the potential "Hot Spots"
4. Share this circular with others who use the Brockville airport

REPORTING AN OCCURENCE OR INCIDENT

*"A loss of aircraft separation or a near collision is a reportable incident. Details should be telephoned to the Aviation Occurrence Centre 1.877.992.6853 (24 hrs)"*  
(Aeronautical Information Manual TC-1004281)

ALLEGIANT AIR ARRIVALS FLIGHT SCHEDULE

Patrick Sharrow, KOGS Airport Manager, has kindly provided the Allegiant Air (KOGS) flight schedule. KOGS departures should not conflict with aircraft operating in the immediate vicinity of CNL3. All times are local hours. *You may wish to carry this schedule in your aircraft for reference purposes.*

JANUARY 2017 ARRIVALS

<u>Wednesday</u>		<u>Saturday</u>	
Flight No.	ETA	Flight No.	ETA
ALLEGIANT 644	09:59	ALLEGIANT 644	09:59
ALLEGIANT 1710	11:30	ALLEGIANT 1710	11:30

FEBRUARY 2017

<u>Wednesday</u>		<u>Saturday</u>	
<b>commencing Feb 1</b>			
Flight No.	ETA	Flight No.	ETA
ALLEGIANT 644	09:59	ALLEGIANT 644	09:59
ALLEGIANT 1710	11:30	ALLEGIANT 1710	11:30
<b>commencing Feb 8</b>			
ALLEGIANT 644	11:30	ALLEGIANT 644	09:59
ALLEGIANT 1710	19:09	ALLEGIANT 1710	11:30
<b>commencing Feb 15</b>			
ALLEGIANT 644	11:15	ALLEGIANT 644	09:05
ALLEGIANT 1710	17:29	ALLEGIANT 1710	17:29

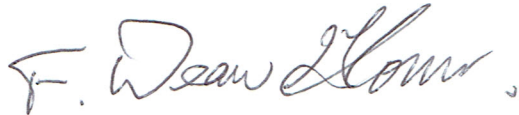
Cont'd.../4

SUMMARY

Brockville and area VFR pilots should remember that the Ogdensburg, NY RNAV (GPS) RWY 9 approach is a published, instrument approach procedure that can be in use on any day and any time. **IFR aircraft may not be on the Brockville ATF (123.0).**

Always remain vigilant for 2000' IFR overflights of the Brockville airport and 2000' aircraft approaching from waypoint HOKVU to the north and waypoint CUKPI to the south.

Aviation safety is a shared responsibility. Let's all do our part.

A handwritten signature in cursive script that reads "F. Dean Glover".

F. Dean Glover  
Pres., Brock Air Services  
Airport Operator CNL3

attach: KOGS RWY 9 approach plate

OGDENSBURG, NEW YORK

AL-5207 (FAA)

16315

WAAS CH 69528 W09A	APP CRS 089°	Rwy ldg THRE 286 Apt Elev 297	6006
--------------------------	-----------------	--	------

# RNAV (GPS) RWY 9

OGDENSBURG INTL (OGS)

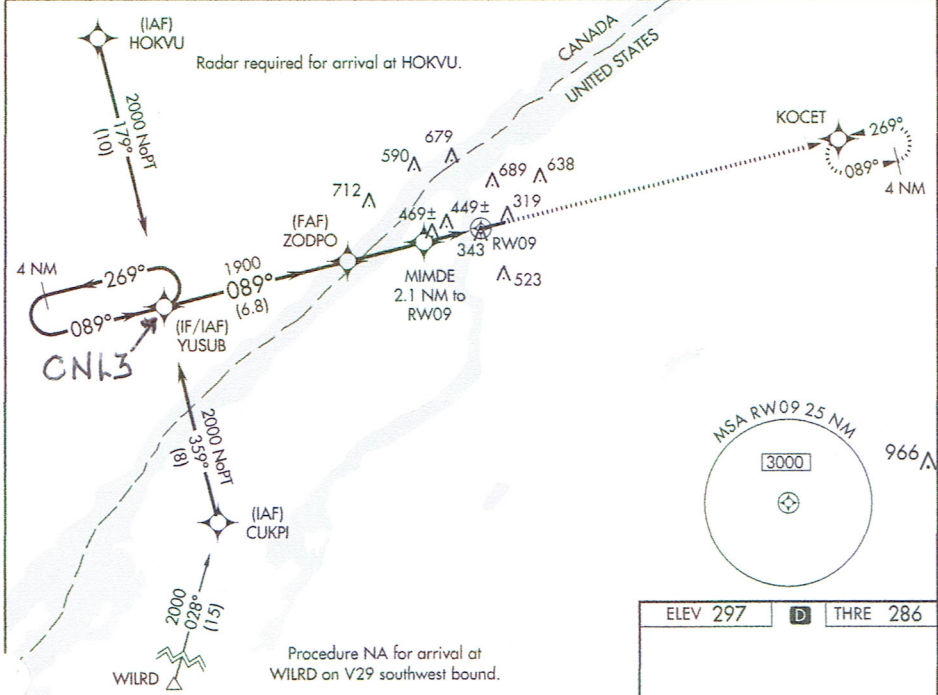
Baro-VNAV NA when using Massena altimeter setting. For uncompensated Baro-VNAV systems, LNAV/VNAV NA below -1.5°C (5°F) or above 42°C (107°F). When VGSI inop, Straight-in/Circling Rwy 9 procedure NA at night. DME/DME RNP-0.3 NA. Visibility reduction by helicopters NA. When local altimeter setting not received, use Massena altimeter setting and increase all DA 81 ft and all MDA 100 ft; increase LPV all Cats visibility 1/8 mile and LNAV/VNAV all Cats, LNAV Cat C/D, and Circling Cat C/D visibilities 1/4 mile.

MISSED APPROACH:  
Climb to 2000 direct  
KOCET and hold.

AWOS-3 118.525	BOSTON CENTER 135.25 377.1	UNICOM 122.8 (CTAF)
-------------------	-------------------------------	------------------------

NE-2, 08 DEC 2016 to 05 JAN 2017

NE-2, 08 DEC 2016 to 05 JAN 2017



4 NM Holding Pattern	YUSUB	ZODPO	MIMDE	RWY 09
2000	1900	1900	1000	2000
GP 3.00° TCH 45	089°	089°	089°	089°
6.8 NM	2.8 NM	2.1 NM	2.1 NM	2.1 NM

\* LNAV only.  
 \* 1000 MSL at ZODPO.  
 \* 2000 MSL at KOCET.  
 \* 6400 X 150 ft runway width.  
 \* REIL Rwy 27, HIRL Rwy 9-27.

OGDENSBURG, NEW YORK  
Orig 31MAY12

44°41'N-75°28'W

# OGDENSBURG INTL (OGS)

## RNAV (GPS) RWY 9

CNL3 POS'n : N 44 38 22  
W 75 45 01

YUSUB N 44 37 96.1  
W 75 44 41.2